

Late features of Kawasaki Disease

Peeling of fingers or toes

{*Periungual Desquamation*}

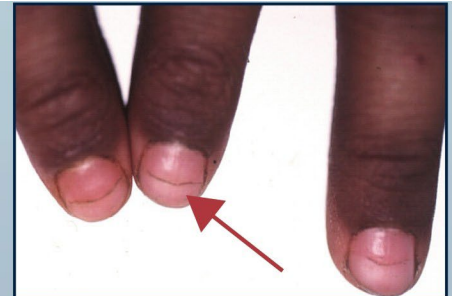
Keep an eye out for peeling on your child's fingertips and toes! Patients with Kawasaki disease may develop this type of thick peeling around the fingernails or toenails, usually two weeks after the start of their illness.



Nail indentations

{*Beau's Lines*}

Search for horizontal nail grooves appearing six weeks after the onset of Kawasaki disease.



If your child develops **peeling** under the nailbed or **grooves across the nail** following an illness that involved **fever, rash, and red eyes**, please contact your doctor and ask about Kawasaki disease. If there are concerns for missed Kawasaki disease, your doctor can contact the hospital page operator at 858-576-1700, ext. 0 between 9am and 5pm and ask to speak to the Kawasaki disease doctor on call.

To learn more about Kawasaki disease, watch "**Kawasaki disease: A Parent Guide**" on YouTube and visit the KD Research Center website at

<https://pediatrics.ucsd.edu/research/centers/kawasaki-disease/index.html>