

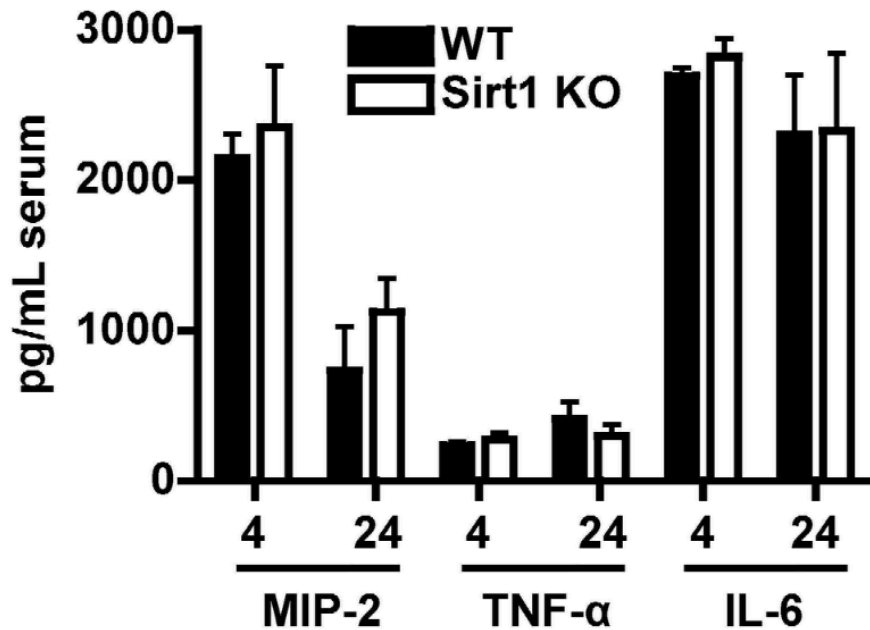
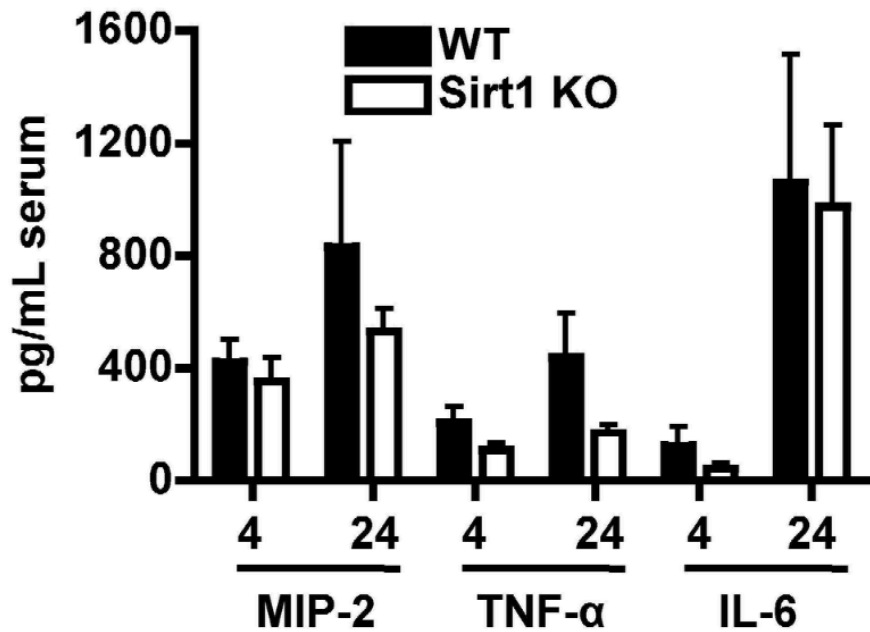
A**B**

Figure S1. Sirtuin1 lysMcre Cre+ KO (SIRT1 KO) and lysMcre Cre- (WT) control mice were injected with LPS i.p. in a gram-negative model of sepsis. Mice were bled via accessing the retro-orbital vein at 4 and 24 hours with heparinized capillary tubes. The blood was spun at 1600rpm for 15 minutes and serum was frozen at -80°C until being diluted 1:10 for ELISAs (R&D Systems Duosets). Serum levels of MIP-2, TNF α , and IL-6 were similar at 4 and 24 hours in WT and SIRT1 KO mice (A). Mice were infected with SPN i.p. in a gram-positive model of sepsis. Serum levels of MIP-2, TNF α , and IL-6 were similar at 4 and 24 hours in WT and SIRT1 KO mice (B). All serum samples from individual mice were tested in triplicate.